

**Govt. of India**  
**Ministry of Human Resource Development**  
**Dept. of School Education and Literacy**  
**Mid Day Meal Division**

**PAB-MDM meeting**  
**to consider and approve**  
**AWP&B 2018-19 of UT: LAKSHADWEEP**

**(Date of Meeting: 23.05.2018)**



मध्याह्न भोजन योजना  
Mid Day Meal Scheme

**APPRAISAL NOTE**

**INDEX**

Sl. No.	CHAPTER	Page no.
<b>Overview</b>	Pre-requisite steps for submission of AWP&B	<b>2-3</b>
	Main Issues from Appraisal	
	Best practices	
<b>Part-A</b>	General Information	<b>4</b>
<b>Part-B</b>	Review of performance during 2017-18	<b>5-13</b>
<b>Part-C</b>	Recommendations of Appraisal Team and Quantification of variables for Central assistance during 2018-19	<b>14</b>
<b>Part-D</b>	Analysis sheet	<b>Annexure-1</b>

## Overview:

### Status on Pre-requisite steps required for submission of AWP&B

PRE-REQUISITE STEP	STATUS
The Plan was approved by SSMC	Yes
Release of funds through e-transfer from UT / District to at least 50% schools	Yes
100% payment of the cost of food grains to FCI	Yes
100% payment of honorarium to cook-cum-helpers through e-transfer to their bank accounts.	Yes
Annual and Monthly data entry for the FY 2017-18 should be completed up to December 2018.	Yes
Emergency Medical Plan on the lines of the contingency plan of Odisha.	Yes
Submission of Plan through MDM-MIS	Yes
Action taken note on commitments given by the UTAdmn during the last PAB Meeting 2017-18	Yes
Action plan for testing of food samples, Number of food samples tested by accredited labs and findings	Not Yet Started
The Plan was submitted after duly signed by the Pr. Secretary / Secretary of the UT Admn within the scheduled date ?	Yes

**B. Main Issues noticed by the Appraisal Team:**

- Use firewood as mode of cooking .
- Utilization of MME (41%)
- Health Check up(0%)
- Mismatch in data between AWP&B and MDM-MIS.

**D. Best Practices:**

- MDM is being provided to children studying up to XII class.
- Additional food items provided Egg, Fish, Chicken, Fruits, etc. are provided in MDM menu.
- Double Fortified Salt is used for preparation of Mid Day Meal.
- Additional contribution to cooking cost of Rs 8.00 in Primary and Rs 9.00 in Upper Primary over and above the central assistance.
- Additional contribution by UT Admn in Honorarium to cook-cum-helpers (i.e. Rs 8500/- per month per CCH).
- E-transfer of honorarium to all CCHs to their bank accounts.
- No complaint of irregularities in implementation of MDMS in the UT received.
- Capacity building and training to different stakeholders.

## Part-A : General Information

### Introduction:

The Union Territory of Lakshadweep is the smallest and a single district Union Territory. The entire territory consists of 27 islands and a number of sunken banks, open reefs and sand banks. 11 islands are inhabited. Other islands are very small and the majority of them exist as satellites of the inhabited islands.

The Union Territory has implemented the Mid-Day Meal Scheme in all the islands, providing hot cooked meals for all children from I to VII standard in all schools since the mid-fifties.

In the UT, all groceries, vegetables and other food items are brought from the mainland due to their scarcity in the islands.

### 1. Basic Information:

(Year 2017-18)

S. No.	INDICATORS	STATUS		
<b>1. No. of Institutions</b>		PRY	U PRY	TOTAL
i)	Existing Institutions	15	24	39
ii)	Covered during the year	15	24	39
<b>2. No. of Children</b>				
i)	Approved by MDM-PAB	3755	2829	6584
ii)	Enrollment as on 30.9.2017	4134	2823	6957
ii)	Average No. of children availed MDM during 01.04.2017 to 31.03.2018	3906(94%)	2661(94%)	6567(94%)
<b>3. Coverage of children as per Quarterly Progress Report (QPR)</b>				
i)	Average no. of children availed MDM as per <b>QPR-1</b>	0(0%)	0(0%)	0(0%)
ii)	Average no. of children availed MDM as per <b>QPR-2</b>	3792(92%)	2631(93%)	6423(93%)
iii)	Average no. of children availed MDM as per <b>QPR-3</b>	3846(93%)	2613(93%)	6459(93%)
iv)	Average no. of children availed MDM as per <b>QPR-4</b>	4073(99%)	2738(97%)	6811(98%)
<b>4. No. of Working Days</b>				
i)	Approved for <b>4 quarters</b>	220	220	
ii)	Covered during <b>4 quarters</b>	220	220	
<b>5. Per unit cooking cost Per child per day (in Rs.)</b>				
AVERAGE UNIT COOKING COST PCPD		12.13	15.18	
UT's contributions in cooking cost per child per day		Rs. 8.00	Rs.9.00	

*\*percentage to enrollment.*

## **Part-B : Review of Performance in 2017-18 (01.04.17 to 31.03.2018)**

2. Based on the information provided by the UT administration in its AWP&B 2018-19, the performance during 2017-18 (01.04.17 to 31.03.2018) has been reviewed. The major issues in implementation during 2017-18 are summarized as under: -

### **2.0 Coverage of Institutions**

**Coverage in terms of No. of institutions.**

**The difference between Existing and institutions covered (Achievement) :-**

**i) PRIMARY**

The number of existing institutions = 15  
A number of institutions covered during 01.04.17 to 31.03.18 = 15 (100%)

**ii) UPPER PRIMARY**

The number of existing institutions = 24  
A number of institutions covered during 01.04.17 to 31.03.18 = 24 (100%)

### **2.1 Coverage of Children**

#### **2.1.1 Coverage against enrollment:**

**a) Primary - Coverage in terms of No. of children. The difference between enrollment vs. Average No. of Children Aailed MDM (Achievement) (Refer Table 2.3 of the Analysis Sheet).**

Total enrollment as on 30.09.2017 = 3755  
Average number of children aailed MDM during 01.04.17 to 31.03.18 = 3906(104%)

**b) Upper Primary: Coverage in terms of No. of children. The difference between enrollment vs Average No. of Children Aailed MDM (Achievement) - UPPER PRIMARY (Refer Table 2.4 of the Analysis Sheet).**

Total enrollment as on 30.09.2017 = 2823  
Average number of children aailed MDM during 01.04.17 to 31.03.18 = 2661(94%)

#### **2.1.2 Coverage against PAB-MDM approval :**

**a) Primary : Coverage in terms of No. of children. Difference between PAB Approval (Target) vs. Average No. of Children Availing MDM (Achievement) (Refer Table 2.3 of the Analysis Sheet).**

The number of children approved by MDM PAB for 2017-18 = 3755  
Average number of children availed MDM during 01.04.17 to 31.03.18 = **3906(104%)**

**b) Upper Primary: Coverage in terms of No. of children. Difference between PAB Approval**

**(Target) Vs Average No. of Children Availing MDM (Achievement)  
(Refer Table 2.6 of the Analysis Sheet).**

The number of children approved by MDM PAB for 2017-18 = 2829  
Average number of children availed MDM during 01.04.17 to 31.03.18 = **2661 (94%)**

**2.1.3 No. of Meals: Difference between No. of meal to be served (Target) Vs. No. of meals Served (Achievement)- PY+U PY (Refer Table 2.6 of the Analysis Sheet).**

The number of meals to be served during 01.04.17 to 31.03.18 = **14.48 lakh**  
The number of meals served during 01.04.16 to 31.03.18 = **14.44 lakh (100%)**

**2.2 FOODGRAINS (PRIMARY + UPPER PRIMARY)**

**2.2.1 Level of Opening Balance as on 01.04.17: (Refer Table 3.2 of the Analysis Sheet).**

The UT has 0.00 MTs (0%) of food-grains as opening balance against the total allocation of 128.93 MTs in 2017-18 as on 1.4.17.

**2.2.2 Level of unspent balance as on 31.03.18: (Refer Table 3.3 of the Analysis Sheet).**

The UT level closing balance as on 31.03.18 is 0.00 MTs (0%) against the total allocation of 128.93 MTs.

**2.2.3 Availability of Food grains: (01.04.17 to 31.03.18) : (Refer Table 3.5 of the Analysis sheet)**

Considering that three-fourth of the year was over by 31.03.18, the district and the islands should have the availability of at least 85% of the food grains allocation. UT level availability as on 31.03.18 was 100% of the total allocation.

**2.2.4 Utilization of food grains: (Refer Table 3.7 of the Analysis sheet)**

An analysis of the utilization of food grains during 2017-18 shows that UT has utilized 100% of the allocated food grains.

**2.2.5 Payment of the cost of foodgrains to FCI: (Refer Table 3.9 of the Analysis sheet)**

The FCI has submitted bills for Rs. 3.87 lakh during 1.4.2017 to 31.03.18 towards cost of food grains. The UT has made payment of Rs. 3.87 lakh (100%) to FCI.

## **2.3 COOKING COST (PRIMARY + UPPER PRIMARY)**

### **2.3.1 Level of Opening balance as on 01.04.17:(Refer Table 4.1.1 of the Analysis Sheet)**

The UT had reported 0.0(0%) lakh opening balance at the beginning of the financial year 2017-18.

### **2.3.2 Level of closing balance as on 31.03.18:(Refer Table 4.1.2 of the Analysis Sheet)**

The UT had a closing balance of Rs. 2.22 lakh (3.05%) towards cooking cost as on 31.03.18.

### **2.3.3 Utilization of Cooking cost:(Refer Table 4.5 of the Analysis Sheet)**

Considering that three-fourth of the year is over by 31.03.18, the districts should have utilized at least 96% of the allocation of cooking cost. UT level utilization is 97%

## **2.4 Reconciliation of utilization and performance during 2017-18 (1.4.17 to 31.03.18)**

### **2.4.1 Mismatch in utilization of Food grains vis-à-vis cooking cost: (Refer Table - 5.1 of Analysis Sheet)**

Ideally the percentage utilization of cooking cost and food grains should tally with each other. The data furnished in the AWP&B reveal that there is mismatch of 11% at UT level in utilization of cooking cost (100%) and food grains (100%).

## **2.5 Cook-Cum-Helper (PRIMARY + UPPER PRIMARY):**

MDM-PAB has approved 110 cook-cum-helpers to be engaged during 2017-18 in the UT, the UT has engaged 110 cook-cum-helpers. The UT has not proposed to engage any additional cook-cum-helpers to the already engaged number i.e. 110. The UT has utilized 100% of the allocated funds for payment of honorarium to cook cum helper. (*Refer Table - 6.2 of Analysis Sheet*).

## **2.6 Utilization of MME(Refer Table - 7.2 of Analysis Sheet)**

Against the allocation of Rs. 30.00 lakh as Central Assistance towards MME funds, the UT has utilized Rs. 12.42 lakh (41%).

## **2.7 Utilization of Transportation Assistance(Refer Table - 8.2 of Analysis Sheet)**

Against the allocation of Rs. 0.96 lakh as Central Assistance towards funds for Transportation Assistance the UT has utilized Rs. 10.57 lakh .

## **2.8 Construction of Kitchen-cum-stores (Reference Table -9.1.2 of Analysis Sheet)**

UT has never submitted a proposal for construction of kitchen cum store to the Ministry.

## **2.9 Procurement of Kitchen devices** (Reference Table -9.2.2 of Analysis sheet)

Central assistance of Rs. 0.65 lakh has been released towards procurement of 13 units of kitchen devices during 2006-07 to 2017-18. The UT has reported that 13 units have been procured. (100%)

## **3. Data Entry Status on the MIS Web Portal**

For smooth functioning of MDMS, the MHRD, MDM Division has developed web based monitoring system, i.e. Web based MIS in collaboration with NIC. In this web portal UT/District/Block users have to make Annual data entry at the beginning of the financial year and Monthly data entry has to be made on a monthly basis into the web portal.

### **3.1 Automated Monitoring Systems (AMS)**

15 out of 39 schools reported data as on 5<sup>th</sup> March, 2018

### **3.2 Annual Data Entry:**

<b><u>FY-2017-18</u></b>					
<b>Annual Data Entry Status_LAKSHADWEEP</b>					
S. No.	District	Total Schools	Completed(Saved)	Pending	% Completed
1	LAKSHADWEEP	39	39	0	100%
	<b>Total</b>	<b>39</b>	<b>39</b>	<b>0</b>	<b>100%</b>
Source: <a href="http://www.trgmdm.nic.in">www.trgmdm.nic.in</a> as on 17 May'18 till 12:23 hrs					

### **3.3 Monthly Data Entry**

(Figures in %)

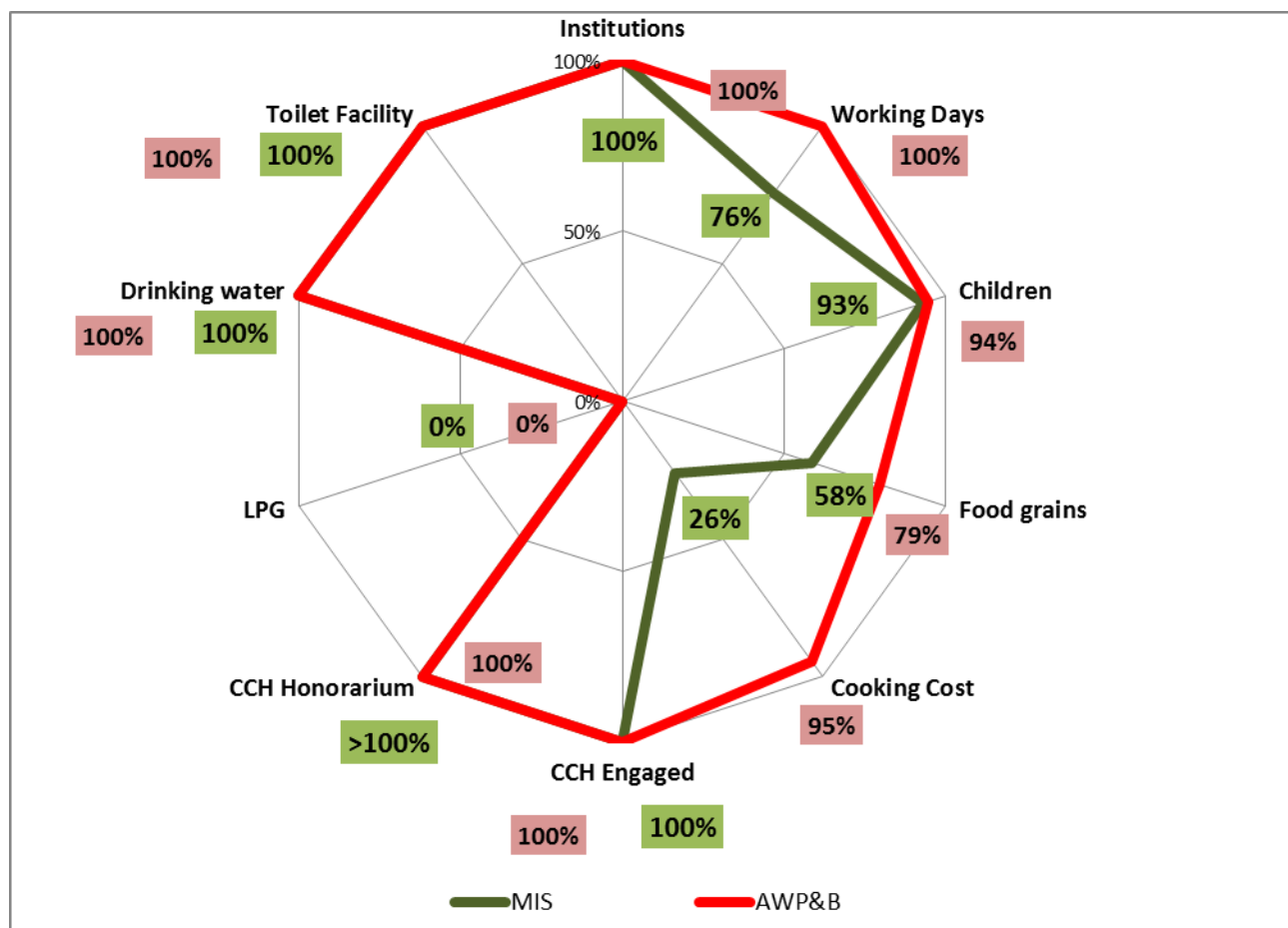
<b><u>FY 2017-18</u></b>															
<b>Monthly Data Entry Status_LAKSHADWEEP</b>															
S. No.	District	Total Schools	% April	% May	% June	% July	% Aug	% Sept	% Oct	% Nov	%Dec	Jan%	Feb %	Mar %	Average %
1	LAKSHADWEEP	39	100%	100%	100%	100%	100%	100%	100%	100%	100%	100%	100%	100%	100%
	<b>Total</b>	<b>39</b>	<b>100%</b>	<b>100%</b>	<b>100%</b>	<b>100%</b>	<b>100%</b>	<b>100%</b>	<b>100%</b>	<b>100%</b>	<b>100%</b>	<b>100%</b>	<b>100%</b>	<b>100%</b>	<b>100%</b>
Source: <a href="http://www.trgmdm.nic.in">www.trgmdm.nic.in</a> as on 17 May'18 till 12:25 hrs															



### 3.4 Mismatch in Data from MIS and AWP&B :-

COMPONENT	MIS	AWP&B
Institutions	39	39
Working Days	167	220
Children	6476	6567
Food grains (In MT)	102.65	139.81
Cooking Cost (Rs. in Lacs)	52.78	190.86
CCH Engaged	110	110
CCH Honorarium (Rs. in Lacs)	168.21	104.50
LPG	0	0
Drinking water	39	39
Toilet Facility	39	39

The graphical representation of the differences in data from MDM-MIS and as submitted by the State through Annual Work Plan & Budget is given below:



#### 4. Release of funds

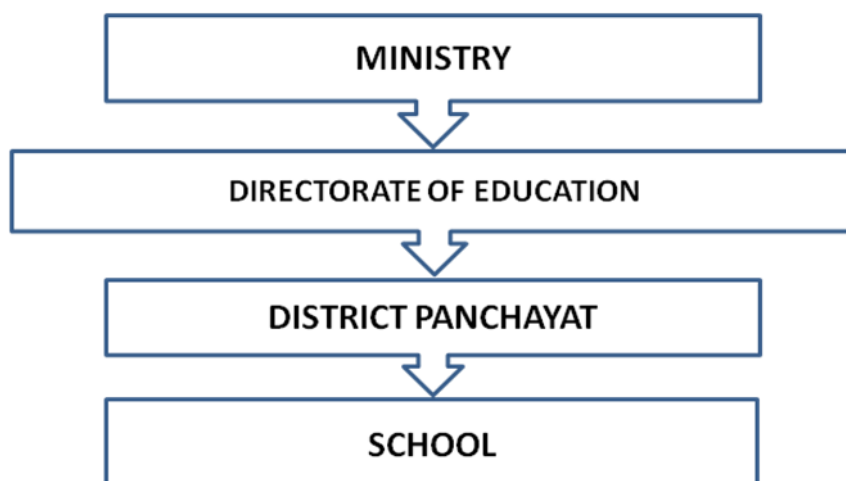
The Department of Education of the UT is releasing Central and UT funds to the District Panchayat for implementing the Mid Day Meal programme. The funds are released on the basis of requirements submitted by the District Panchayat. Funds are released in two to three installments after obtaining expenditure and Utilization Certificates.

Funds released from the Education Directorate of UT are released to Lakshadweep District Panchayath (Implementing Agency). Lakshadweep District Panchayath releases Fund to School Bank Accounts after accessing requirement of each School.

The ad-hoc installment of funds was released on 28<sup>th</sup>April, 2017 by Govt. of India and the same was received by the UTAdmn on 03.05.2017 and it was received at the school level on 10.07.2017. The balance of the first installment of funds was released on 07.07.2017 by Govt. Of India and the same was received by the UTAdmn on 11.07.2017 and it was received at the school level on 29.11.2017 and the second installment of funds was released on 23.03.2018 by Govt. of India and the same was received by the UTAdmn on 23.03.2018 and it was received at the school level on 04.04.2018.

#### 5. Management Structure

The District Panchayat is the implementing authority of the Mid Day Meal Programme in schools and the Directorate of Education closely monitors the implementation of the scheme. The management structure of the MDM scheme in UT is given below:



## 6. Menu

The weekly menu under MDM scheme is given below.

Sl .No	Days	Food Items
1	Monday	Rice /Dhal/fish, green gram
2	Tuesday	Rice/ Dhal /Egg / green gram
3	Wednesday	Rice/ Dhal / green gram / meat
4	Thursday	Rice/Dhal/Green gram/chicken
5	Saturday	Rice/Dhal /Green gram/meat.
6	Sunday	Rice/Dhal / Green gram/egg.

Note: Above items are served according to the availability of items in the local market.

Additional Food items provided (fruits/milk/any other items), if any from State/UT resources. Frequency of their serving alongwith per unit cost per day.

Egg, Fish, Chicken, Fruits etc. are served as additional items in Mid Day Meal according to the availability of items in the local market.

## 7. Capacity Building

There is no Food Craft Institution or reputed institution in the UTL for provides training to CCH. However the SMC members and stakeholders are provided training in 2016-17. It is propose to organize capacity building to MDM officials of Island Level, SMC members, teachers, stake holders and Cook cum helpers in 2017-18. On pre-implementation of Automated Monitoring System (AMS) training was given to data entry operators in schools in islands..

## 8. Tasting of Meal

The system of tasting MDM by one teacher and one CCH before serving to children in the schools has already been introduced strictly and it is being properly complied with. A tasting register is being maintained recording the name and observations of the before serving the meals to the students.

## 9. Testing of food samples:

Due to non-availability of the National Accreditation Lab for food testing in the UT, the Department of Education of UT has approached a Lab in the State of Kerala, Based on the clarification sought by a Lab there, the Department has taken the matter with competent authority and the matter is being pursued now.

## 10. Grievance Redressal Mechanism

1. Details regarding Grievance Redressal at all levels,  
The two-tier Grievances Redressal system is functioning in Lakshadweep and is given below.

Sl. No.	Level	Grievances Redressal Officers
1	UT/District level	Director of Education, U.T. of Lakshadweep
2	Island level	Principals/Headmasters of GSSS, Agatti, Amini, Chetlat, Kalpeni, Kavaratti, Kiltan and Minicoy/GHS, Andrott, Kadmat and SBS, Bitra

Toll Free Telephone number have been installed in the District Level Grievances Redressal Cell w.e.f.5.4.2018 and details of Telephone number connected is given below.

### Telephone No. of Grievances Redressal Mechanism

#### A. Island Level

S.No	Island	Designation of Grievances Redressal Officers	Telephone Numbers
1	Agatti	Principal, GSSS	04894 242253
2	Amini	Principal, GSSS	04891 273255
3	Andrott	Principal, GSSS	04893 232323
4	Bitra	Headmaster, GSBS	04890 275222
5	Chetlat	Principal, GSSS	04899 276256
6	Kadmat	Principal, GSSS	04897 274223
7	Kalpeni	Principal, GSSS	04895 252225
8	Kavaratti	Principal, GSSS	04896 262218
9	Kiltan	Principal, GSSS	04898 272239
10	Minicoy	Principal, GSSS	04892 222251

#### B.State/UT Level

State/UT	Designation of Grievances Redressal Officers	Toll Free Telephone Number
Lakshadweep	Directorate of Education	1800-425-2344

2.Details of complaints received i.e. Nature of complaints etc.

3.Time schedule for disposal of complaints,

4. Details of action taken on the complaints.

So far, no complaints on MDM have been registered on the implementation of MDM scheme and complaints if any on implementation of MDM will be disposed in the day of receipt of complaint or within a week time.

## 11. Contingency Plan to avoid any untoward incident

As Contingency plan in case of emergencies, the phone numbers of Primary Health Centre, hospitals, fire brigade etc..are painted/written on the conspicuous place for wide information to avoid untoward incidents. Instructions have been issued to all schools to strictly maintain the Contingency Plan.

**--oOo--**

## Part-C : Recommendations of Appraisal Team for 2018-19

### PAB -MDM decisions

No	Details	UT's Proposal for 2018-19		Recommendations by Appraisal Team for 2018-19	
<b>1</b>	<b>No. of Children &amp; Institutions</b>				
<b>1.1</b>	<b>Primary</b>	<b>No. of institutions</b>	<b>No. of Children</b>	<b>No. of institutions</b>	<b>No. of Children</b>
1.1.1	Govt. + Govt. Aided + LB schools	15	4134	15	4073
1.1.2	Special Training Centers (NCLP)	0	0	0	0
1.1.3	Madarsa/Maqtab	0	0	0	0
	<b>TOTAL (1.1)</b>	<b>15</b>	<b>4134</b>	<b>15</b>	<b>4073</b>
<b>1.2</b>	<b>Upper Primary</b>				
1.2.1	Govt. + Govt. Aided + LB schools	24	2823	24	2738
1.2.2	Special Training Centers	0	0	0	0
1.2.3	Madarsa/Maqtab	0	0	0	0
	<b>Total (1.2)</b>	<b>24</b>	<b>2823</b>	<b>24</b>	<b>2738</b>
<b>1.3</b>	<b>Drought</b>				
1.3.1	Primary	0	0	0	0
1.3.2	Upper Primary	0	0	0	0
	<b>Total (1.3)</b>	<b>0</b>	<b>0</b>	<b>0</b>	<b>0</b>
	<b>GRAND TOTAL (1.1 + 1.2 + 1.3)</b>	<b>39</b>	<b>6957</b>	<b>39</b>	<b>6811</b>
<b>2</b>	<b>No. of Working days</b>				
2.1	Primary		220		220
2.2	Upper Primary		220		220
2.3	NCLP		0		0
2.4	Drought	Primary	0		0
		Upper Primary	0		0
<b>3</b>	<b>No. of Cook-cum Helpers*</b>				
3.1	Primary		32		32
3.2	Upper Primary		78		78
	<b>Total</b>		<b>110</b>		<b>110</b>
<b>4.</b>	<b>Kitchen-cum-store</b>		<b>PROPOSAL NO</b>		<b>Nil</b>
<b>5.</b>	Kitchen Devices	New Schools	Nil		Nil
		replacement	Nil		Nil

**QUANTIFICATION OF CENTRAL ASSISTANCE FOR 2018-19**

**A. Food grains**

Sl. No.	Stage	No. of Children	No. of Working days	Quantity in MTs.
1	Primary (@ 100 gms per child per school day)	4073	220	89.60
2	Up. Primary (@150 gms per child per school day)	2738	220	90.35
3	NCLP (@150 gms per child per school day)	0	0	0
4	Drought	0	0	0
4.1	Primary	0	0	0
4.2	Upper Primary	0	0	0
<b>TOTAL</b>		6811		<b>179.95</b>

**B. Cost of Foodgrains, Cooking cost, Transport Assistance, Hon. to cook-cum-helpers and Management Monitoring and Evaluation (MME)**

Sl. No.	Component/norm	Amount admissible (Rs. In lakh)
1	2	3
<b>Primary</b>		
1	Cost of Food grains @ Rs. 3000/- per MT for 89.60 MT rice + cess-0%	2.68
2	<b>Unit Cooking Cost- Rs. 4.13 per day / per child for 4073 children for 220 days</b>	
2.1	<b>Central Share @ Rs. 4.13 per child/day</b>	37.00
3	<b>Transportation Cost @ Rs. 750.00 Per MT food grains</b> (4073 x 220 days x 0.0001 MT x Rs.750.00)	0.67
4	<b>Honorarium for cook cum Helper</b>	
4.1	<b>Central Share - (32 x Rs.1000x 10 months)</b>	3.20
5	Management, Monitoring and Evaluation (MME) Rs. 30 lakh per district	30.00
<b>TOTAL - {1+2.1 +3+4.1+5}</b>		<b>73.55</b>
<b>Upper Primary</b>		
6	Cost of Foodgrains @Rs. 3000/- per MT for 90.35 MT rice +cess-0%	2.71
7	<b>Unit Cooking Cost 6.18 per day / per child for 2738 children for 220 days</b>	

7.1	Central share @ Rs 6.18 per child/day	37.22
8	Transportation cost @ Rs. 750.00 Per MT food grains (2738 x 220 days x 0.00015 x 750.00)	0.67
9	Honorarium to cook cum Helper	
9.1	Central Share - (78x Rs.1000x 10 months)	7.80
10	Management, Monitoring and Evaluation (MME)	Included in Primary
	<b>TOTAL - {6+7.1 +8+9.1+10}</b>	<b>48.40</b>
<b>Grand Total (Primary + Upper Primary+)</b>		<b>121.95</b>

C. Drought : Nil

D. Non-recurring : Nil

E. Total Requirement of Funds for 2018-19

(Rs. In lakh)

Component		Centre <u>As per revised norms 100% central</u>
Recurring	Normal	121.95
	Drought	0
Non- recurring		0
Total		121.95

--oOo--